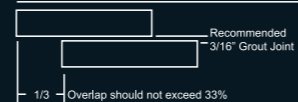


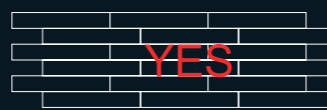


ASHEVILLE			
Technical Specifications	Reference Standard	Standard Requirements	Test Results
Water Absorption	UNI EN ISO 10545-03	< 0.5 %	0.2%
Breaking Strength	UNI EN ISO 10545-04	Minimum: 1300 N	1450 N
Modulus of Rupture	UNI EN ISO 10545-04	Minimum: 35 N/mm <sup>2</sup>	47 N/mm <sup>2</sup>
Shock Resistance	UNI EN ISO 10545-05	Suggested Minimum: e > 0.55	0.87
Resistance to Deep Abrasion	UNI EN ISO 10545-06	Maximum: 175 mm <sup>3</sup>	117 mm <sup>3</sup>
Thermal Linear Expansion	UNI EN ISO 10545-08	Minimum for Floor Applications: Class 3	7.1/7.1
Thermal Shock Resistance	UNI EN ISO 10545-09	Resistant	Resistant
Moisture Expansion	UNI EN ISO 10545-10	As Reported	0.1
Frost Resistance	UNI EN ISO 10545-12	As Reported	Resistant
Chemical Resistance	UNI EN ISO 10545-13	Domestic Chemical Products: UB / GB Acids and Alkalis: As Reported	A B
Stain Resistance	UNI EN ISO 10545-14	Minimum: Class 3	5/5/5
PEI Rating (Scratch Resistance)	ASTM C 1027	As Reported	CORNER I FALLS IV GORGE IV ESTATE V
Dynamic Coefficient of Friction (DCOF)	ANSI A 137.1	For Level Interior Spaces Expected to be Walked Upon When Wet	> 0.42
Shade Variation	Not Available	As Reported	V4
Thickness	Not Available	As Reported	9 mm ± 5% ± 0.4 mm
Number of Screens	Not Available	As Reported	15 (8" x 48") - 30 (6" x 24")

#### INSTALLATION TIPS



1/3 Overlap should not exceed 33%

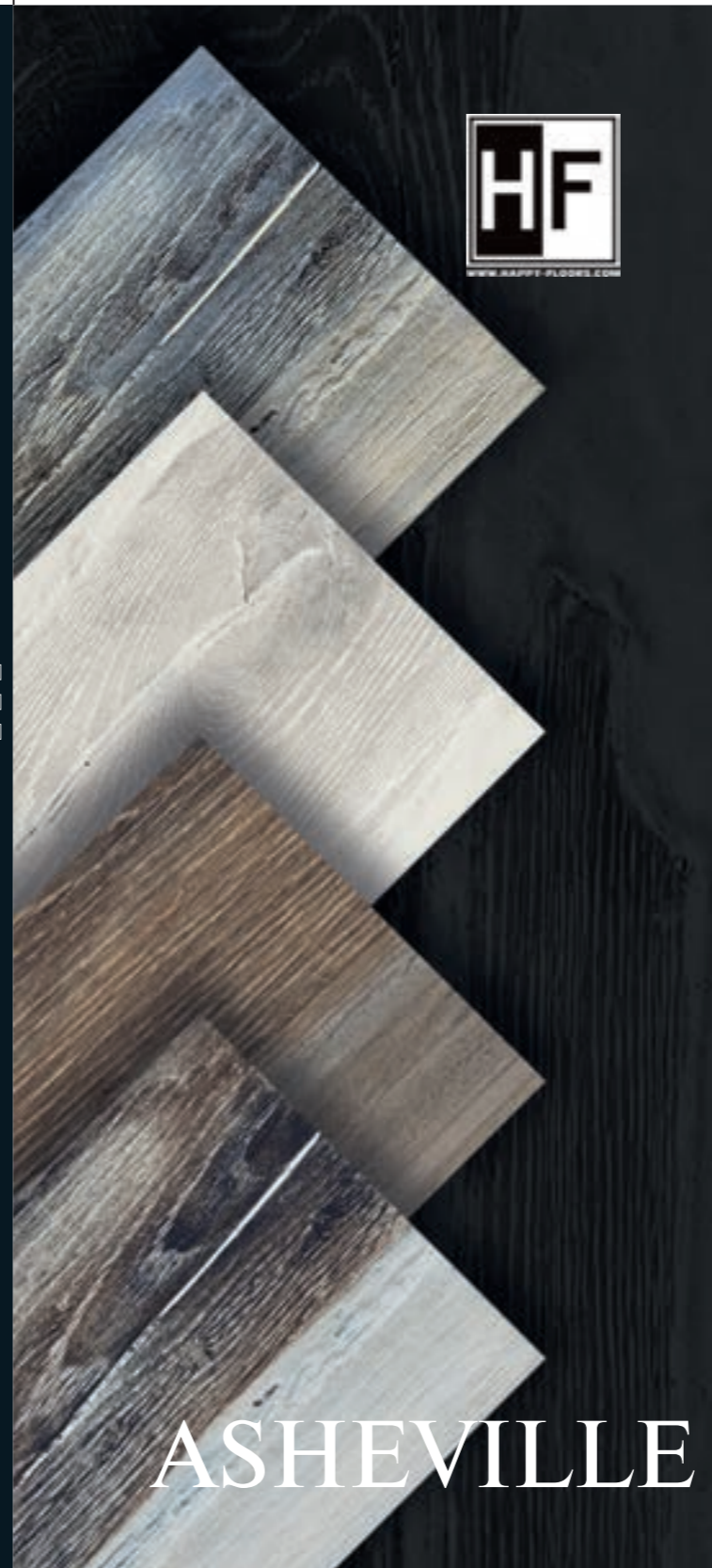


**HAPPY FLOORS**  
www.happy-floors.com



# ASHEVILLE

ASHEVILLE FALLS





ASHEVILLE ESTATE



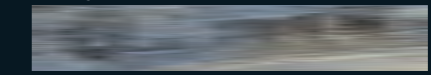
ASHEVILLE COTTAGE



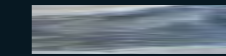
ASHEVILLE GORGE

## ASHEVILLE FALLS

FALLS



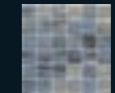
8" x 48"



6" x 24"



3" x 24"  
Bullnose



2" x 2" Mosaic  
12" x 12" Sheet

## ASHEVILLE ESTATE

ESTATE



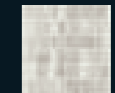
8" x 48"



6" x 24"



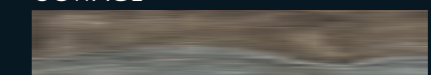
3" x 24"  
Bullnose



2" x 2" Mosaic  
12" x 12" Sheet

## ASHEVILLE COTTAGE

COTTAGE



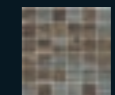
8" x 48"



6" x 24"



3" x 24"  
Bullnose



2" x 2" Mosaic  
12" x 12" Sheet

## ASHEVILLE GORGE

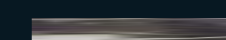
GORGE



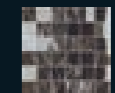
8" x 48"



6" x 24"



3" x 24"  
Bullnose



2" x 2" Mosaic  
12" x 12" Sheet